



# ST CLEMENT DANES SCHOOL

Chenies Road, Chorleywood, Hertfordshire WD3 6EW

[www.stclementdanes.org.uk](http://www.stclementdanes.org.uk)



## Year 7 Careers & Enterprise Challenge Day 2018

## Information about participating companies



# Introduction



We are delighted to announce the second St Clement Danes Careers and Enterprise Challenge Day.

St Clement Danes will be welcoming companies from both the local and international business communities into school for an innovative and exciting day of activities. You can read more about these companies in the following pages. The students will spend the day gaining a better understanding of the world of work, challenging their views and perceptions of life after education.

The day is targeted at Year 7 students and gives them the opportunity to learn about different career options available, raising their expectations and aspirations as they begin to plan towards their future career paths.

At St Clement Danes we want our students to be confident in their pursuits and passions, to be ever curious in approaching new ideas and environments and to be courageous in their choices and decisions. We are very grateful to the companies who are giving up their time to help us achieve these ambitions in this way.

A handwritten signature in black ink, appearing to read 'Toby Sutherland'.

**Toby Sutherland, Headteacher**

## Participating Companies

**Britvic**  
**Hertfordshire Police**  
**Grey Advertising**  
**NHS**  
**Metro Bank**  
**Tesco**  
**West Herts College - Hospitality and Catering**  
**West Herts College - Travel, Tourism & Aviation**  
**West Herts College - Sports Science**





**“Our vision is for Britvic to become the most dynamic, creative and trusted soft drinks company in the world.”**

With great brands such as Robinsons, Tango, 7UP, Pepsi, Teisseire, Maguary, Club Orange, Ballygowan, and of course the Britvic mixers and juices brand, Britvic plc is a leading soft drinks manufacturer, operating across a number of international markets. Dedicated to creating and building brands that delight consumers, the company also has a strong track record of innovation, and successful product developments.

Britvic operates out of UK, France and Ireland, and also through an Internationally focused company which is Britvic International. Britvic International is responsible for the export business to over 50 countries around the world.

The acquisition of Ebba, a high quality soft drinks business in Brazil, has provided a great opportunity to combine two leading soft drinks companies. Ebba is the number one supplier of liquid dilutes and the number two in Ready to Drink nectars in Brazil.

### **What to expect on the day:**

- Who is Britvic?
- What is a good CV?
- Social media do's and don'ts
- Become part of our marketing team and learn how to create a new brand!





The Herts way is to reduce crime, catch criminals and keep people safe – **Can you be the one to help achieve this?**

Every day is different working for Hertfordshire Constabulary, You'll test your mental, emotional and physical capabilities.

Work with a team built on trust and mutual respect.

Build a career that delivers both personal satisfaction and the opportunity to make a real and visible difference within the community.



There are many roles within Hertfordshire Constabulary; Police officers, Special Constables, Police Community Support Officers, Communication Operators, Volunteers, Detectives, Firearms and many more.

Each playing a significant part in achieving the goals set out by the constabulary. One will not work without the other.

Hertfordshire Police offer an extensive training programme

Hertfordshire Constabulary offers lots of exciting career opportunities, **are you ready to be part of this team?**

### Activities for the day

Talks from Police Community Support Officer & Police Constable

Videos and Images of Life in Hertfordshire Police Force

Police Van, Police uniform, Riot Shield

Crime Prevention.

Questions and Answers

### What we hope you will get from our session

Gain an insight into what it means to work for Hertfordshire Constabulary. Learn about the different job roles, application, assessment and training, progression and what we do on a day to day basis.





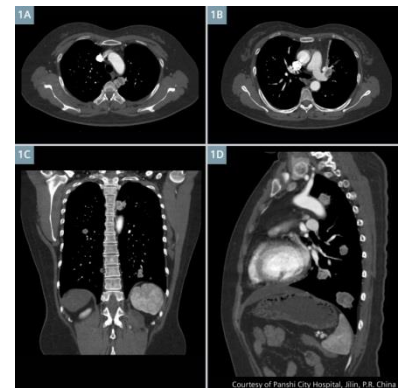
Radiographers are healthcare professionals that trained to take medical images such as x-rays.

We provide a vital role in caring for patients as without radiographers Doctors would not be able to see inside the body and diagnose illnesses and injuries.

We work with advanced state-of-the-art equipment and technology to do our jobs but we are also responsible for radiation safety.



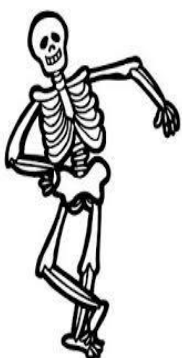
Radiographers are needed 24 hours a day, 365 days a year. You can usually find us in hospitals (in A&E or the Imaging department) and some health care centres.



To become a radiographer a degree in radiography is required which takes 3 years. It is a practical course with approximately 50% of the academic year on clinical placement. Science subjects are required at GCSE and A level. Also, some work experience in a clinical setting would be really useful too.

Every day is different, as radiographers work in different parts around the hospital and can specialise in different areas. Team work and patient care is at the heart of what we do.

## Activities on the day



- Identifying bones
- Looking at x-rays
- Spotting abnormalities



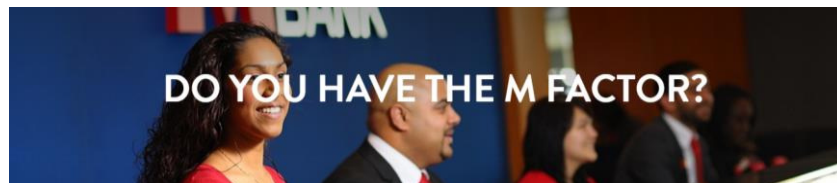
Monday – Friday: 8am – 8pm Saturday: 8am – 6pm Sunday 11am – 5pm

# METRO BANK

Metro bank was established on a simple precept - offer the **best customer experience**, however, whenever and wherever the customer wants it. Its stores are open **7 days a week, 362 days a year** and customers benefit from a **24 hour contact centre** based in London, and full internet banking services.

The revolutionary high street bank offers personal and business banking services, with a focus on providing unparalleled levels of service and convenience. The bank is based in London and the south and in just under seven years has grown to more than one million business and personal accounts across 48 stores.

Unlike any other bank in the UK, every metro bank store provides **free coin counting** with metro bank magic money machines, instant account opening and **on the spot replacements** for lost or stolen credit and debit cards, **customer toilets**, as well as **safe deposit boxes**. What's more, metro bank actively **welcomes dogs** into the bank, with a selection of dog goodies including fresh water bowls and treats.



Do you have the 'M Factor?' Here at Metro bank we Hire for attitude and Train for skill.

There are a variety of job roles within Metro bank that may excite you...

We will be sending a **Cashier**, **Customer Service Representative**, **Assistant Store Manager** and **Local Business Manager** to the Career's Day to let you know all about our store based roles. We will also be sending people from our **Training team** from the 'Metro Bank University' to let you know what your first days at Metro bank could look like!

We're excited to visit you all on July 4<sup>th</sup> to introduce you to the world of banking and can't wait to help you look into a possible future career with **Metro bank!**

## ACTIVITIES ON THE DAY!

HOW TO IDENTIFY  
FAKE NOTES AND  
CHEQUES!

HOW TO SPOT A  
FRAUDSTER!

CASH COUNTING  
AND MORE....

# Space, Range and Display.

The team from Space, Range & Display at Tesco will be giving the students an introduction into the retail industry, the Tesco business and how we manage space & ranges.

The students will gain an insight in to how we manage space across our estate, build ranges and display products in an engaging and useful way for our customers to help make the shopping journey as easy as possible.



## Space

Ensuing the right mix of space within our stores and categories.

Building retail layouts that follow our flows and adjacency principles to improve the shopping trip for our customers.



## Range

Building a range of products to suit all customers needs.  
Reviewing range performance in our stores.

Launching new products to keep us relevant in the market.



## Display

Building displays that are visually appealing to customers as well as operationally efficient for our retail colleagues.  
Ensuring correct stock holding through our displays to maintain great availability at all times of the day.

## What's happening in the session?

- Break out activity on Display – Students will be able to use real life examples to build their own product displays to understand how displays need to be visually engaging as well as operationally efficient.

West Herts College is a general further education College with three main campuses in Watford, Hemel Hempstead and Kings Langley. We have a great range of qualifications to choose from, including; full-time career-focused courses and in-demand apprenticeships; Foundation degrees and HNDs that are highly valued by employers; and part-time courses that help boost individuals CVs.

**97%**

of full-time students  
would recommend  
West Herts College - the  
highest score in  
Hertfordshire!



## Year 7 Enterprise Day Tuesday 3 July 2018

Our Professional Cookery, Hospitality, Sport, Travel and Aviation tutors will be visiting St Clement Danes School to deliver the following activities:

- **Aviation** - Evacuation procedure
- **Cookery** - Food nutrients quiz
- **Hospitality** - Professionally laying a restaurant table
- **Sport** - Fitness session
- **Travel** - 'Where in the World' quiz





This Digital Publication is sponsored by



My name is Shirish Chauhan and I am an Enterprise Adviser working with St Clement Danes School. Enterprise Advisers are senior business volunteers who work closely with a local school or college to develop a careers plan that puts opportunities with employers at the heart of a young person's education. More details on careers enterprise [here](#).

I run a digital marketing agency helping businesses with lead generation and business growth through what we call the four pillars of digital marketing – site, search, social and mobile. [More details](#).

## DIGITAL MARKETING SERVICES



DISPLAY & REMARKETING



PAY PER CLICK



MARKETING AUTOMATION



CONTENT MARKETING



VIDEO MARKETING



WEB ANALYTICS



WEB DESIGN & DEVELOPMENT



SOCIAL MEDIA MARKETING



SEARCH ENGINE OPTIMIZATION



LANDING PAGE OPTIMIZATION



EMAIL MARKETING



MOBILE MARKETING

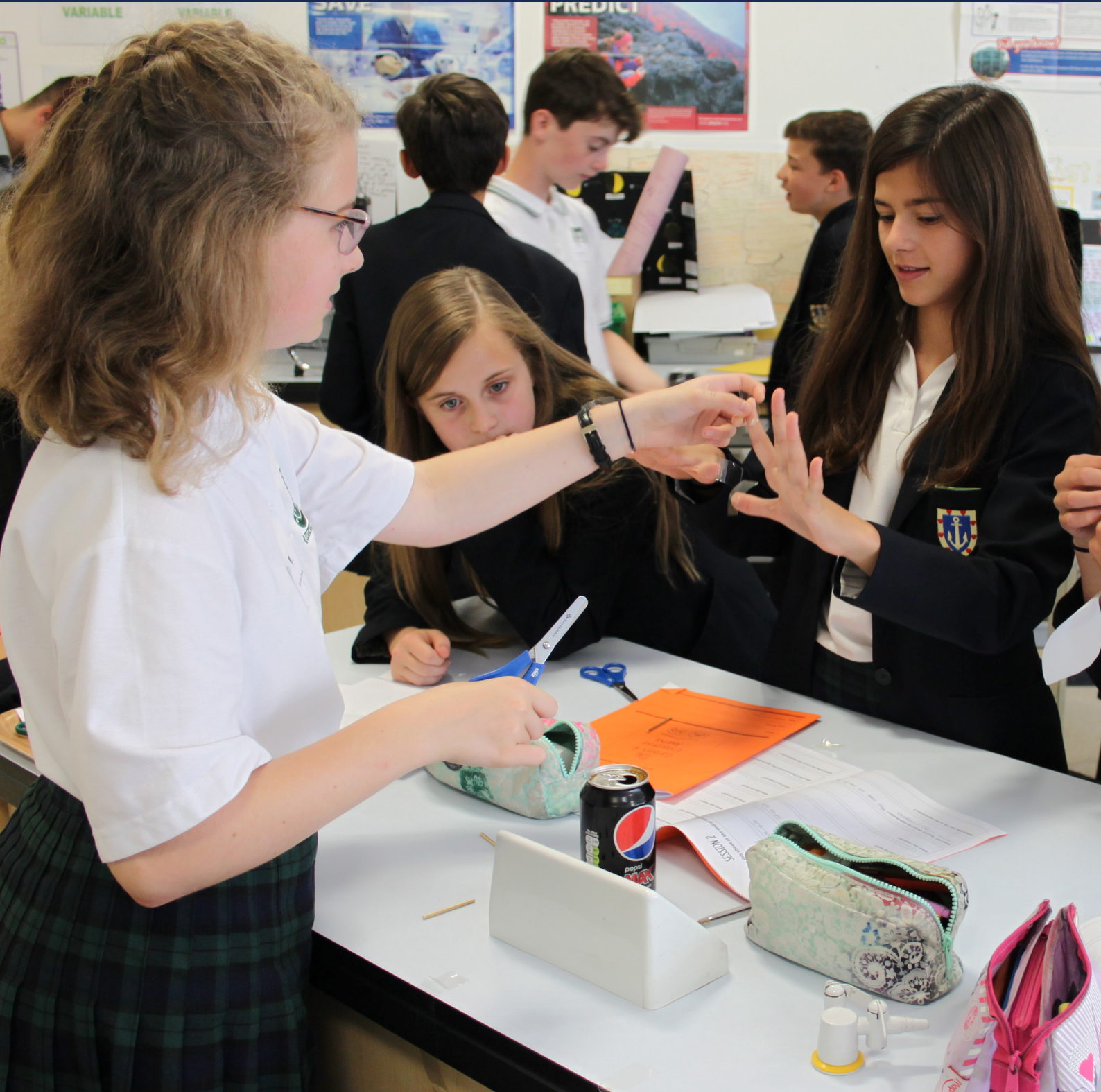


YOUR  
PARTNER IN  
DIGITAL  
MARKETING





Loyauté m'oblige



# ST CLEMENT DANES SCHOOL

Chenies Road, Chorleywood, Hertfordshire WD3 6EW

[www.stclementdanes.org.uk](http://www.stclementdanes.org.uk)



Part of the Danes Educational Trust

